

### NEW RACOR HYDROCARBON FIXED BASE OPERATION SERIES (FBO)

Parker Filter Division Europe has introduced the new Fixed Base Operation (FBO) Series to meet the toughest hydrocarbon refueling conditions - and simplify filter element changeouts in mobile, stationary, industrial, marine and aviation applications.

The new Racor FBO assemblies can be used on mobile refuelers or installed in refuelling cabinets. The units can also be used for diesel fuel dispensing pumps or as a primary fuel filter/water separator for diesel engines.



FBO - 10	Maximum Flow Rates				Clean Dry	Change
	Flow Range	Diesel	Jet Fuel	Gasoline	Delta P	Delta P
Prefilter	5 - 40 gpm	20	40	50	**	20 PSID
Filter Sep	5 - 35 gpm	18	35	45	**	15 PSID
Absorber	5 - 25 gpm	18	35	45	**	30 PSID
FBO - 14	Flow Range	Diesel	Jet Fuel	Gasoline	Delta P	Delta P
Prefilter	10 - 60 gpm	30	60	75	**	20 PSID
Filter Sep	10 - 50 gpm	25	50	65	**	15 PSID

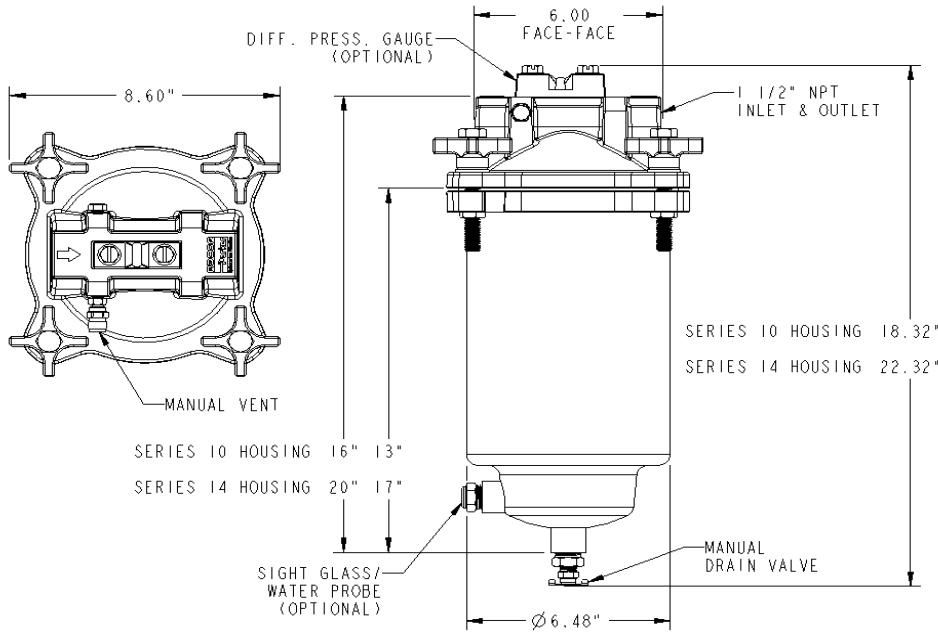
\*\* Varies with fluid and flow rate.

The assembly features a locking ring collar (no clamps) which attaches the filter housing to the aluminium die-cast filter head with four bolts.

The slotted locking ring collar allows maintenance personnel to hand-loosen the four collar bolts, rotate and lower the steel filter bowl assembly for element changeouts. With the new element installed, the bowl is simply raised and rotated into position on the locking ring and hand tightened.

The closure system consists of stainless steel nuts, bolts and washers with metal thumb wheels for ease of maintenance – one person can easily change the filter element. No special tools are required for this operation.

FBO-10 and FBO-14 Specifications



**Notes:**

1. All Dimensions and Weights are approximate.
2. Maximum Operating Pressure: 10 bar (150 psi)
3. Estimated Housing Weight:  
**FBO-10 Series:**  
 Dry - 5.9 kg (13 lbs)  
 Wet - 10.4 kg (23 lbs)  
**FBO-14 Series:**  
 Dry - 6.7 kg (15 lbs)  
 Wet - 12.5 kg (28 lbs)

Element Applications Chart

	Micron Rating	FBO-10	FBO-14
		6 X 10 Element	6 X 14 Element
Filter Separator	1	FBO-60327	FBO-60336
	5	FBO-60328	FBO-60337
	10	FBO-60353	FBO-60356
	25	FBO-60329	FBO-60338
Prefilter	1	FBO-60330	FBO-60339
	5	FBO-60331	FBO-60340
	10	FBO-60354	FBO-60357
	25	FBO-60332	FBO-60341
Absorptive Filter	1	FBO-60333	FBO-60342
	5	FBO-60334	FBO-60343
	10	FBO-60355	FBO-60358
	25	FBO-60335	FBO-60344

PROSEP FILTER SYSTEMS LTD  
Unit G19  
River Bank Way  
Lowfields Business Park  
Elland  
West Yorkshire  
HX5 9DN

**Tel: 01422 377367**

**Fax: 01422 377369**

Email: [enquiries@prosep.co.uk](mailto:enquiries@prosep.co.uk)

[www.prosep.co.uk](http://www.prosep.co.uk)

**Map and Directions to Prosep Filters Limited**



Leave M62 at Junction 24.

At roundabout adjacent to Cedar Court Hotel take 2nd exit onto dual carriageway (A629), signposted Halifax.

Take 1st exit slip road.

At roundabout at end of sliproad, take 3rd exit off.

This is the entrance to Lowfields Business Park.

Proceed straight over 1st roundabout.

At next roundabout take 2nd exit onto River Bank Way - Prosep Filters can be found on the left after the S-bend.

[Link to Google Maps](#)