

Products

Liquid filtration - clarification

PROPLEAT



Polypropylene

3 - 20 micron absolute

- Continuous length rigid sleeve and core provide high strength during normal and reverse flow operations
- Retention ratings to suit a wide range of clarification applications

PROPLEAT cartridges have been developed to bridge the gap between meltblown depth filters and absolute rated pleated media filters. Their continuous length and all-polypropylene construction results in a robust yet economical design that maximizes the effective filtration area and provides wide chemical compatibility, coupled with low extractable levels.

PARMAX



Polypropylene

5 - 20 micron absolute

- Large diameter yields much higher flow rates compared to traditional filters
- Absolute retention ratings for critical filtration

PARMAX has been developed for pre-clarification and clarification of bottled water from source, using a depth polypropylene media with optimised pleat geometry. PARMAX with its wide format diameter offers high flow rates and an inside to outside flow configuration that offers high particulate holding capacities and better retention of contaminants.

PEPLYN HD



Polypropylene

3 - 35 micron absolute

- Graded density and increased depth resulting in high dirt holding capacity
- Ideally suited to high volume, forward flow processes

PEPLYN HD has been developed using graded pore density depth polypropylene media for clarification of wine from source. The PEPLYN HD has outstanding particulate holding capacity through its multi-layer depth construction providing optimized filtration for wine sources with high particulate loading and size distribution.

PEPLYN HA



Polypropylene

3 - 100 micron absolute

- Graded density results in high dirt holding capacity
- Optimized pleat configuration maximizes backwash efficiency

The PEPLYN HA has been developed using graded density polypropylene depth media for the clarification of wine. PEPLYN HA is designed to capture particles on the surface of the media where the rigid, open pleat structure ensures that the backwash cleaning provides effective removal of trapped particulate.

PROSPUN



Polypropylene

0.5 - 75 micron

- High dirt holding capacity
- Consistent absolute retention under a wide range of operating conditions
- Ideal for primary stage filtration

PROSPUN is the most economical solution for delivering general liquid clarification and particle retention. It can be used as a guard filter to protect the process against high variable levels of particulate.

Liquid filtration - pre-stabilization

PREPOR PP



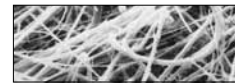
Polypropylene

0.6 - 1 micron absolute

- Fine clarification to provide bright finished product
- Prefiltration duty to extend the lifetime of downstream microporous filters

PREPOR PP filter cartridges will significantly reduce numbers of yeast and spoilage organisms from beverage products, to provide extremely cost effective microbial stabilization. The cartridges will also 'condition' liquids and can be used to improve the filterability of products prior to terminal stabilization by thermal or filtrative methods.

PREPOR GF



Borosilicate microfibre

2 - 10 micron absolute

- Removal of low levels of bioburden, such as natural yeasts, from incoming liquids
- Fine clarification of products and ancillary liquids to extend the lifetime of microporous membrane filters

PREPOR GF filter cartridges have been specifically developed for fine clarification of wine, products and ancillary liquids. The higher efficiency grades also provide excellent bioburden reduction and protection to microporous membranes.

PREPOR GP



Borosilicate microfibre / polypropylene

0.5 - 1.5 micron absolute

- Composite media provides high strength and dirt holding capacity
- High efficiency removal of spoilage organisms and yeasts

PREPOR GP with its pleated combination of borosilicate microfibre and high efficiency polypropylene media is ideally suited for polishing applications and final membrane protection in the wine industry.

Liquid filtration - final stabilization

BEVPOR PS



Polyethersulphone

0.2 - 1.2 micron stabilizing

- Can be sanitized and regenerated for extended life
- Low adsorption of protein colours and flavours

BEVPOR PS utilizes an advanced polyethersulphone membrane configured to provide high flow and cost-effective performance. The membrane has an asymmetric pore structure, resulting in increased capacity to hold contaminants. Componentry has been selected to maximize mechanical strength and chemical compatibility enabling the filter to withstand repeated chemical cleaning and sterilization.

BEVPOR PT



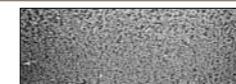
Polypethersulphone

0.2 - 0.65 micron

- Membrane prefilter layer provides extended service life in wine with colloidal loading
- Low adsorption of protein, colours and flavours

The BEVPOR PT has been developed using a PES membrane and an integral prefilter layer to provide high flow rates, long life and improved throughputs. Combination of the asymmetric pore prefilter and final membrane layers, provide a graded filtration throughout their depth, resulting in increased capacity to hold colloidal matter and other contaminants.

BEVPOR PH



Polyethersulphone

0.2 - 1.2 micron absolute

- Integral prefilter layer maximizes service life
- Can be sanitized and regenerated for extended life
- Higher surface area extends service life

The BEVPOR PH combines a prefiltration layer with a final PES asymmetric membrane to provide a graded filtration throughout their depth that enables high flow rates, long life and improved throughputs. The hardware selected in the construction of the BEVPOR PH is able to withstand repeated chemical cleaning and steam sterilization.

Products

Air / gas filtration

BIO-X



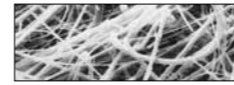
Borosilicate microfibre

Sterilizing grade

- High temperature operation 200 °C (329 °F)
- Robust construction

BIO-X II air sterilization filter cartridges utilize a borosilicate glass microfibre media. This media has proven to be particularly effective in the removal of sub-micron particles as small as 0.01 micron, therefore ensuring the removal of all micro-organisms including bacteria and viruses.

HIGH FLOW BIO-X



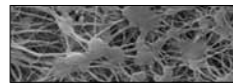
PTFE impregnated borosilicate microfibre

Sterilizing grade

- Exceptional flow rates with low pressure drops
- Integrity testable by aerosol challenge

HIGH FLOW BIO-X combines proven depth filter technology and a pleated construction to provide retention down to 0.01 micron in gas. Flow rates typically 2-3 times that of membrane filters make HIGH FLOW BIO-X the filter that can dramatically reduce cartridge usage and installation size.

TETPOR AIR



Expanded PTFE

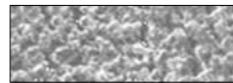
Sterilizing grade

- Assured biosecurity with absolute rated filtration
- High flow rates with low pressure drops
- High voids volume PTFE membrane

TETPOR AIR sterilization filter cartridges offer exceptional filtration performance while providing the highest levels of biosecurity throughout the process industry. Operating at ambient temperature conditions, TETPOR AIR filter cartridges provide a cost effective filtration solution.

Steam filters

SINTERED



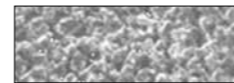
316L stainless steel

1.0 - 25 micron

- Ideally suited for low flow rate applications
- Available in culinary grade 1 micron
- Low pressure drops

Steam is an often neglected part of a process, regarded as an add on to a customer's liquid or gas filtration needs. It has however, large specific applications in its own right and should be treated with the same level of importance as air, gas and liquid systems if long filter lifetimes and system cost effectiveness are to be achieved.

PLEATED



316L stainless steel

1.0 - 5.0 micron

- Re-cleanable metal fibre 316L Stainless Steel
- Exceptionally high flow rates
- Available in culinary grade 1 micron

Steam is an often neglected part of a process, regarded as an add on to a customer's liquid or gas filtration needs. It has however, large specific applications in its own right and should be treated with the same level of importance as air, gas and liquid systems if long filter lifetimes and system cost effectiveness are to be achieved.

Products

Housings

Liquid housings



- A full range of stainless steel housings specifically designed for the beverage industry

Air housings



- A full range of stainless steel housings specifically designed for the beverage industry

Integrity testing

VALAIRDATA II



- Aerosol challenge testing
- Integrity testing of gas filters

BEVCHECK PLUS



- Pressure decay and diffusional flow testing
- Convenient built-in printer provides printed test report
- Flexible - suitable for use with compressed air or nitrogen

Gas generation

MAXIGAS



Nitrogen gas generators
MAXIGAS generators produce high quality nitrogen in-house at a fraction of the cost.

- Space saving
- Easy to increase supply as require

CO₂ protection

PCO₂



Carbon dioxide polishing filter
PCO₂ offers protection against carbon dioxide contamination and impurities of up to 10 times the allowable levels detailed in the ISBT carbon dioxide quality guidelines.

PROSEP for all your filter requirements Filter Systems

PROSEP FILTER SYSTEMS LTD
Unit G19
River Bank Way
Lowfields Business Park
Elland
West Yorkshire
HX5 9DN

Tel: 01422 377367
Fax: 01422 377369

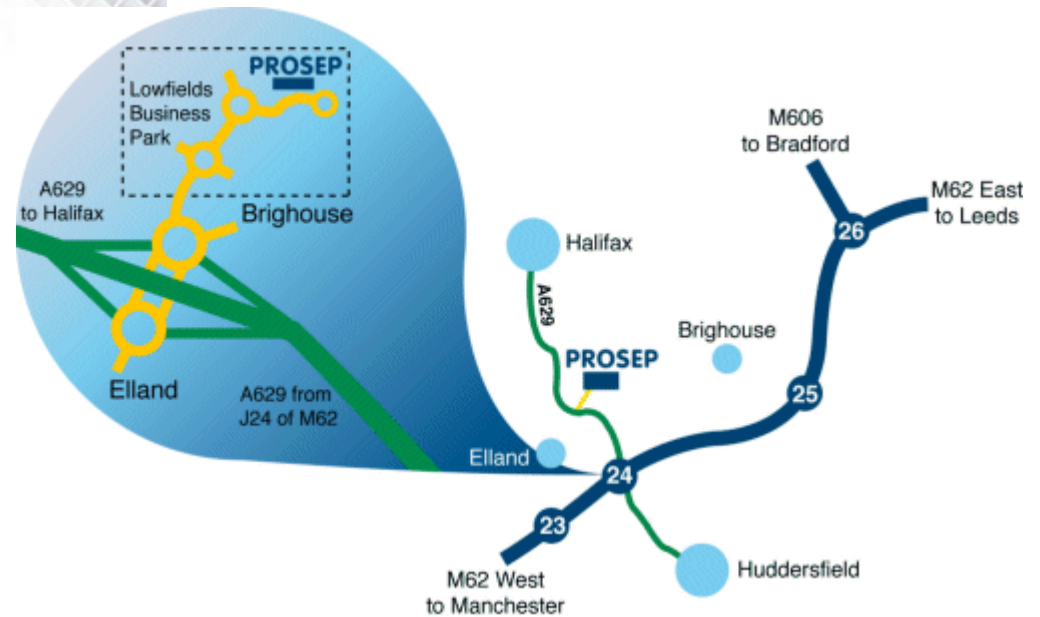
Email: enquiries@prosep.co.uk
www.prosep.co.uk

SERVICE DIVISION

We provide every aspect of private water supply treatment from the initial sinking of boreholes to the on-going maintenance of the filtration systems we install.

www.prosepfilterservices.co.uk

Map and Directions to Prosep Filters Limited



Leave M62 at Junction 24.
At roundabout adjacent to Cedar Court Hotel take 2nd exit onto dual carriageway (A629), signposted Halifax.
Take 1st exit slip road.
At roundabout at end of sliproad, take 3rd exit off.
This is the entrance to Lowfields Business Park.
Proceed straight over 1st roundabout.
At next roundabout take 2nd exit onto River Bank Way - Prosep Filters can be found on the left after the S-bend.

[Link to Google Maps](#)