

PROSEP FILTER SYSTEMS LTD

62 SERIES 10 STACK HOUSING

No.	Description	Material
1	LID	316L ST.STL.
2	HIGH GUIDE + CUP	316L ST.STL.
2	HIGH GUIDE + CUP	316L ST.STL.
2	HIGH GUIDE + CUP	316L ST.STL.
2	HIGH GUIDE + CUP	316L ST.STL.
3	GUIDE CUP	316L ST.STL.
4	CENTRE ROD TOP SECT	316L ST.STL.
5	SPRING + SEAL ASSEMBLY	316L ST.STL.
6	COMPRESSION PLATE	316L ST.STL.
7	COMP NUT + WASHER	316L/PTFE
8	COMP NUT WASHER	PTFE
9	TOP GASKET	E.P.
9	TOP GASKET	SILICONE
9	TOP GASKET	VITON
10	CLAMP	304 ST.STL.
11	CLAMP TEE BAR	316L ST.STL.
12	DRAIN CAP	316L ST.STL.
13	VENT CAP	316L ST.STL.

Connection Options	Dim 'B'	Dim 'F'
3" ANSI B16.5 150lb SO	614	235
DN80 DIN 2633	656	280
3" TRI-CLAMP	604	225
NW80 DIN 11851 'M'	626.5	247.5
3" RJT 'M'	604	225
3" IDF 'M'	604	225



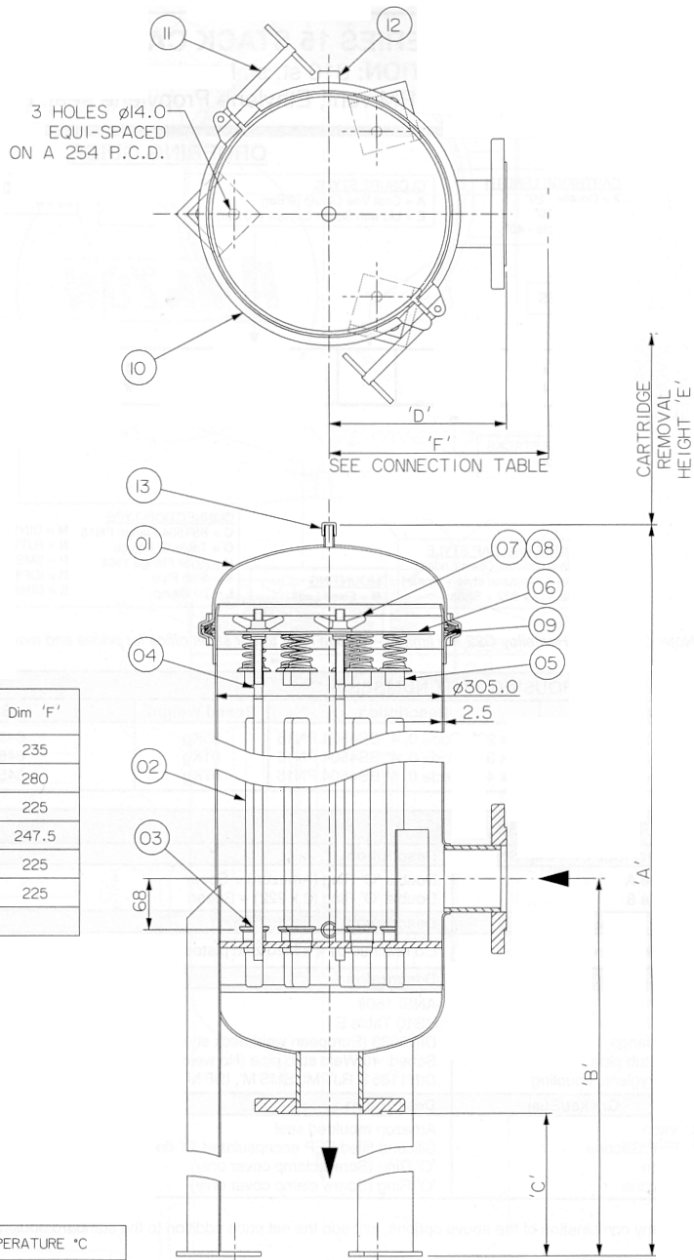
DESIGN PRESSURE Bar g		DESIGN TEMPERATURE °C	
LIQUID	GAS	MIN.	MAX.
8.5	N/A	0	110

Model	No. of Cartridges	Max Operating Conditions Bar.g and °C	Materials of Construction	Connection Size and Type	Volume (litres)	Dry Weight (kg)	Dimension (mm)				
							A	B	C	D	E
621020AB30CIEE	10 x 20"	SEE TABLE	316 ST.STL.	3" BS4504 PN16 RF/SO	58	50	1223	614	300	235	500
621030AB30CIEE	10 x 30"	SEE TABLE	316 ST.STL.	3" BS4504 PN6 RF/SO	76	57	1478	614	300	235	750
621040AB30CIEE	10 x 40"	SEE TABLE	316 ST.STL.	3" BS4504 PN16 RF/SO	94	64	1733	614	300	235	1000

62 SERIES 10 STACK HOUSING
WITH DISHED END
FOR D.O.E. CODE 'O' ELEMENTS

Drg. No. 6210-1

Rev. 2



UNIT G19, RIVER BANK WAY, LOWFIELDS BUSINESS PARK,
ELLAND, WEST YORKSHIRE HX5 9DN
TEL: 01422 377367 FAX: 01422 377369
Email: sales@prosep.co.uk Web: www.prosep.co.uk