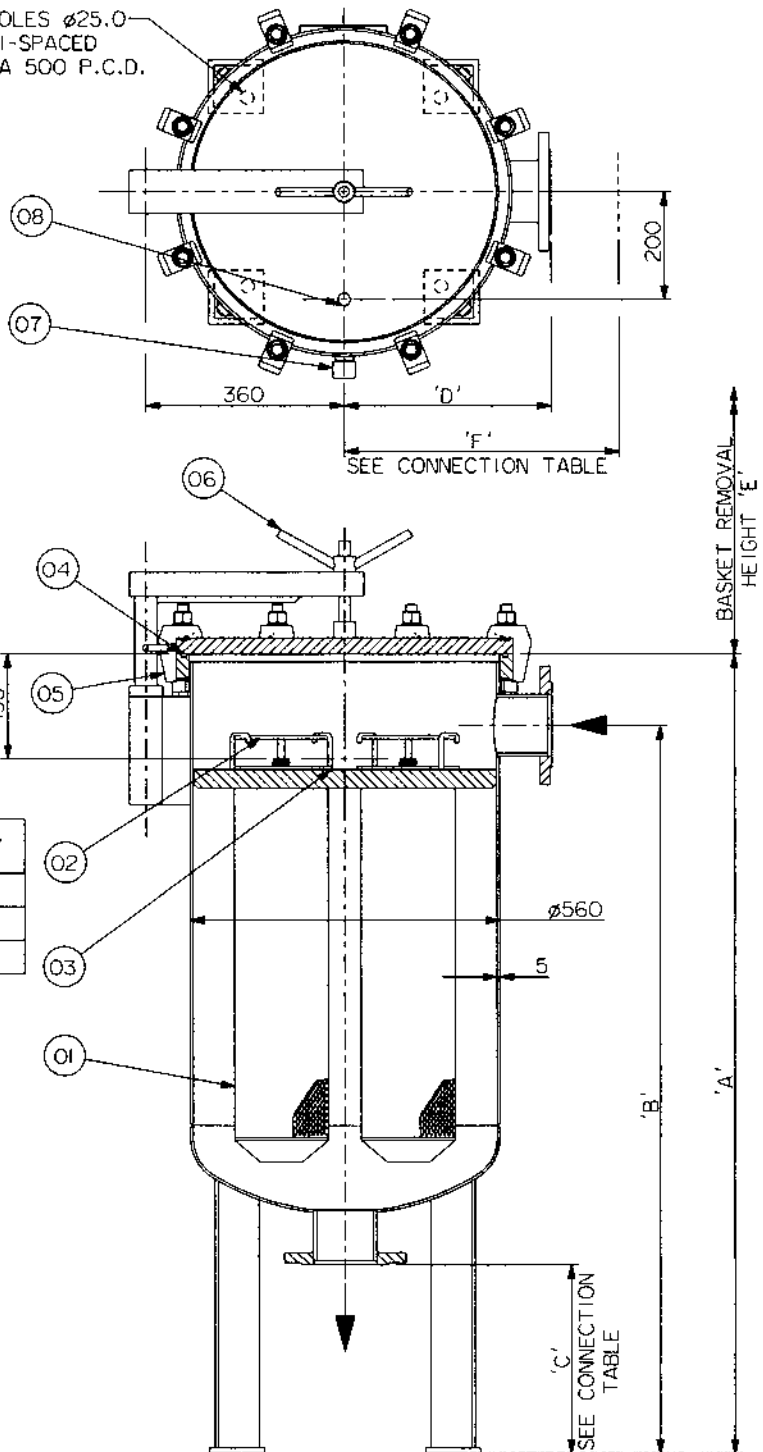


PROSEP FILTER SYSTEMS LTD

4 Pot Bag Type 88

No.	Description	Material	Stock Code
1	SINGLE BASKET	316L ST.STL.	80S01000
1	DOUBLE BASKET	316L ST.STL.	80S02000
1	TRIPLE BASKET	316L ST.STL.	80S03000
2	BASKET COMPRESSION PLATE	316L ST.STL.	88S000001
3	INNER 'O' RING	E.P.	88S00000E
3	INNER 'O' RING	FEP ENCAP'D SILICONE	88S00000F
3	INNER 'O' RING	SILICONE	88S00000S
3	INNER 'O' RING	VITON	88S00000V
4	TOP 'O' RING	E.P.	88S04000E
4	TOP 'O' RING	FEP ENCAP'D SILICONE	88S04000F
4	TOP 'O' RING	SILICONE	88S04000S
4	TOP 'O' RING	VITON	88S04000V
5	CLAMP	CARBON STL.	60S000025
6	DAVIT NUT	316L ST.STL.	62S240000
7	DRAIN CAP	316L ST.STL.	60S000006
8	VENT PLUG	316L ST.STL.	60S000008

4 HOLES $\phi 25.0$
EQUI-SPACED
ON A 500 P.C.D.



Connection Options	Dim 'C'	Dim 'F'
4" ANSI B16.5 150lb SO	350	375
DN100 DIN 2633	405	420



• REFER TO ORDERING GUIDE

DESIGN PRESSURE Bar g		DESIGN TEMPERATURE °C	
LIQUID	GAS	MIN.	MAX.
10	N/A	0	110

	No. of Bags	Max Operating Conditions Bar.g and °C	Materials of Construction	Connection Size and Type	Volume (litres)	Dry Weight (kg)	Dimension (mm)				
							A	B	C	D	E
	4 x SINGLE	SEE TABLE	304/316L/CS	DN100 BS4504 PN16 FLANGES	238	253	1123	990	350	375	400
	4 x DOUBLE	SEE TABLE	304/316L/CS	DN100 BS4504 PN16 FLANGES	247	286	1483	1350	350	375	750
	4 x TRIPLE	SEE TABLE	304/316L/CS	DN100 BS4504 PN16 FLANGES	338	320	1865	1730	350	375	1150

UNIT G19, RIVER BANK WAY, LOWFIELDS BUSINESS PARK,
ELLAND, WEST YORKSHIRE HX5 9DN
TEL: 01422 377367 FAX: 01422 377369
Email: sales@prosep.co.uk Web: www.prosep.co.uk