

# PREPOR PP Food and Beverage

Filter Cartridges



PREPOR PP filter cartridges will significantly reduce the number of yeast and spoilage organisms from beverage products, providing extremely cost-effective pre-stabilization of process liquids.

PREPOR PP filters will also “condition” liquids and can be used to improve the visual clarity and filterability of products, to benefit the performance and efficiency of terminal stabilization operations such as final membrane stabilization and pasteurization.

The filters have been designed to withstand harsh operating conditions. Their mechanical strength and wide chemical resistance make them suitable for aggressive clean-in-place operations using chemicals and steam.

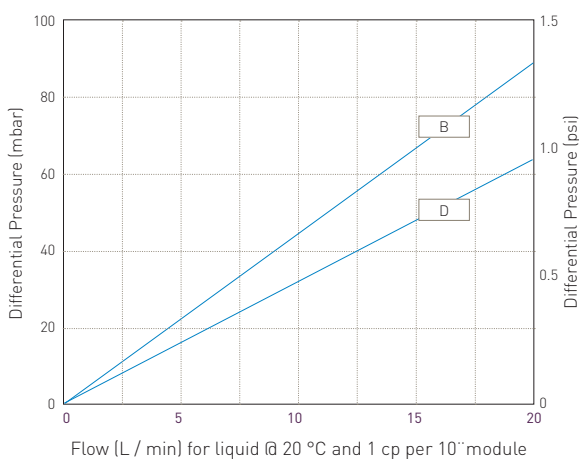
## Features

- Validated retention to yeast and spoilage bacteria
- High filtration area pleated media
- Thermally bonded, all polypropylene construction

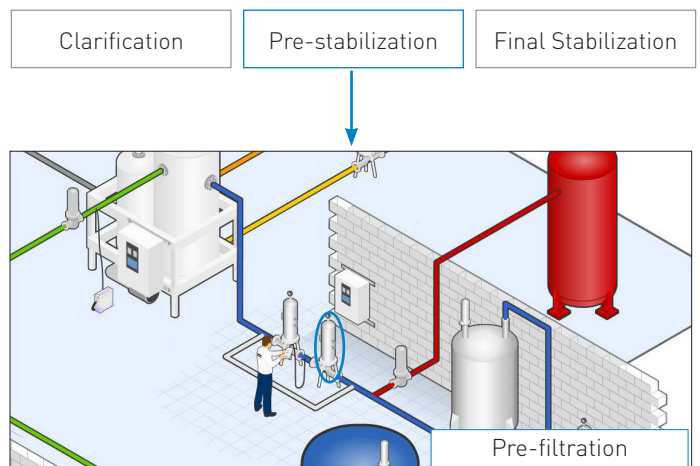
## Benefits

- Short-term microbial stability of process liquids
- High flow and service life to blockage
- Compatible with aggressive process conditions including chemical cleaning and steam sterilization

## Performance Characteristics



## Filtration Stage



## Specifications

### Materials of Construction

Filtration Media:	Polypropylene
Upstream Support:	Polypropylene
Downstream Support:	Polypropylene
Inner Support Core:	Polypropylene
Outer Protection Cage:	Polypropylene
End Caps:	Polypropylene
End Cap Insert:	316L Stainless Steel
O-rings/gaskets:	Silicone / EPDM

### Effective Filtration Area (EFA)

10" (250 mm) Up to 0.5 m<sup>2</sup> (5.38 ft<sup>2</sup>)

### Cleaning and Sterilization

PREPOR PP cartridges can be repeatedly steam sterilized in-situ or autoclaved at up to 135 °C (275 °F). They can be sanitized with hot water at up to 90 °C (194 °F) and are compatible with a wide range of chemicals.

### Manufacturing Traceability

Each filter cartridge displays the product name, product code and lot number. Additionally, each module displays a unique serial number providing full manufacturing traceability.

### Food Contact Compliance

Materials conform to the relevant requirements of FDA 21 CFR Part 177, current EC1935 / 2004 and current USP Plastics Class VI - 121 °C.



### Retention Characteristics

The retention characteristics of PREPOR PP filters have been determined by a combination of controlled laboratory tests and in-use monitoring for a number of organisms.

### Recommended Operating Conditions

Up to 70 °C (158 °F) continuous operating temperature and higher short-term temperatures during CIP to the following limits:

Temperature		Max Forward dP	
°C	°F	(bar)	(psi)
20	68	5.0	72.5
40	104	4.0	58.0
60	140	3.0	43.5
80	176	2.0	29.0
90	194	1.0	14.5
>100 (steam)	>212 (steam)	0.3	4.0

Organism	LRV when challenged with a minimum of 10 <sup>7</sup> cfu per cm <sup>2</sup>	
	B	D
<i>Saccharomyces cerevisiae</i>	4	2
<i>Escherichia coli</i>	2	-
<i>Deinococcus oenos</i>	2	-
<i>Serratia marcescens</i>	2	-

## Ordering information

PPP	-		-	N	-		-	A	-	
Code	Length (Nominal)	Code	Micron	Code	End Cap (10 inch)	Code	O-rings			
1	10" (250 mm)	B	0.6 µm	C	BF / 226 Bayonet	S	Silicone			
2	20" (500 mm)	D	1.0 µm	D	Fin / 222	E	EPDM			
3	30" (750 mm)			E	Flat Top / 222					
4	40" (1000 mm)			G	Recess / 222					
				H	UF Retrofit					
				R	BF / 222 Bayonet					

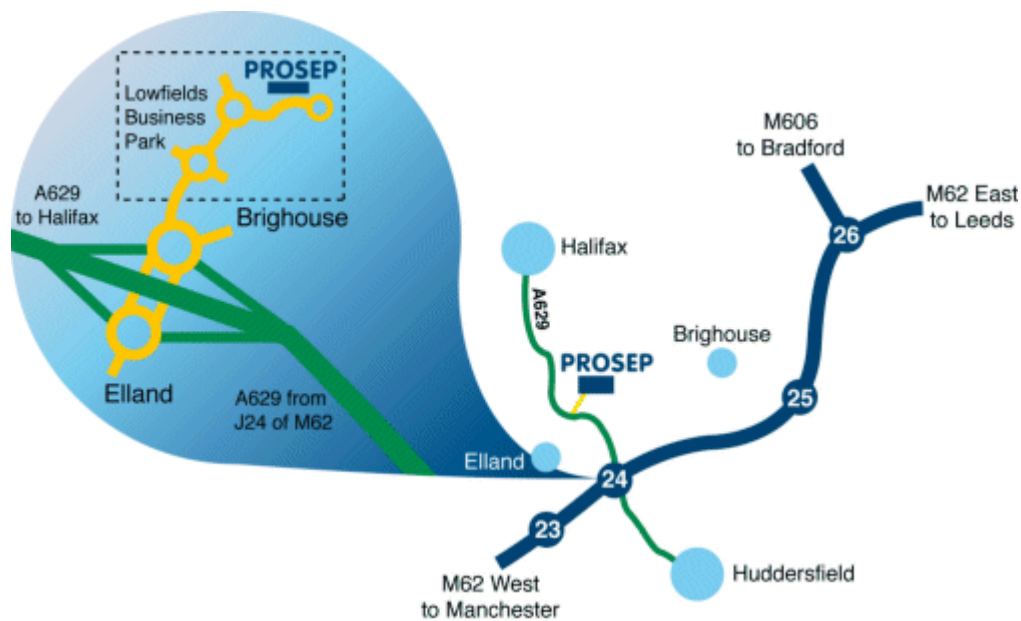
VSH & HSL  
HOUSING RANGE  
AVAILABLE

PROSEP FILTER SYSTEMS LTD  
Unit G19  
River Bank Way  
Lowfields Business Park  
Elland  
West Yorkshire  
HX5 9DN

**Tel: 01422 377367**  
Fax: 01422 377369

Email: [enquiries@prosep.co.uk](mailto:enquiries@prosep.co.uk)  
[www.prosep.co.uk](http://www.prosep.co.uk)

**Map and Directions to Prosep Filters Limited**



Leave M62 at Junction 24.  
At roundabout adjacent to Cedar Court Hotel take 2nd exit onto dual carriageway (A629), signposted Halifax.  
Take 1st exit slip road.  
At roundabout at end of sliproad, take 3rd exit off.  
This is the entrance to Lowfields Business Park.  
Proceed straight over 1st roundabout.  
At next roundabout take 2nd exit onto River Bank Way - Prosep Filters can be found on the left after the S-bend.

[Link to Google Maps](#)