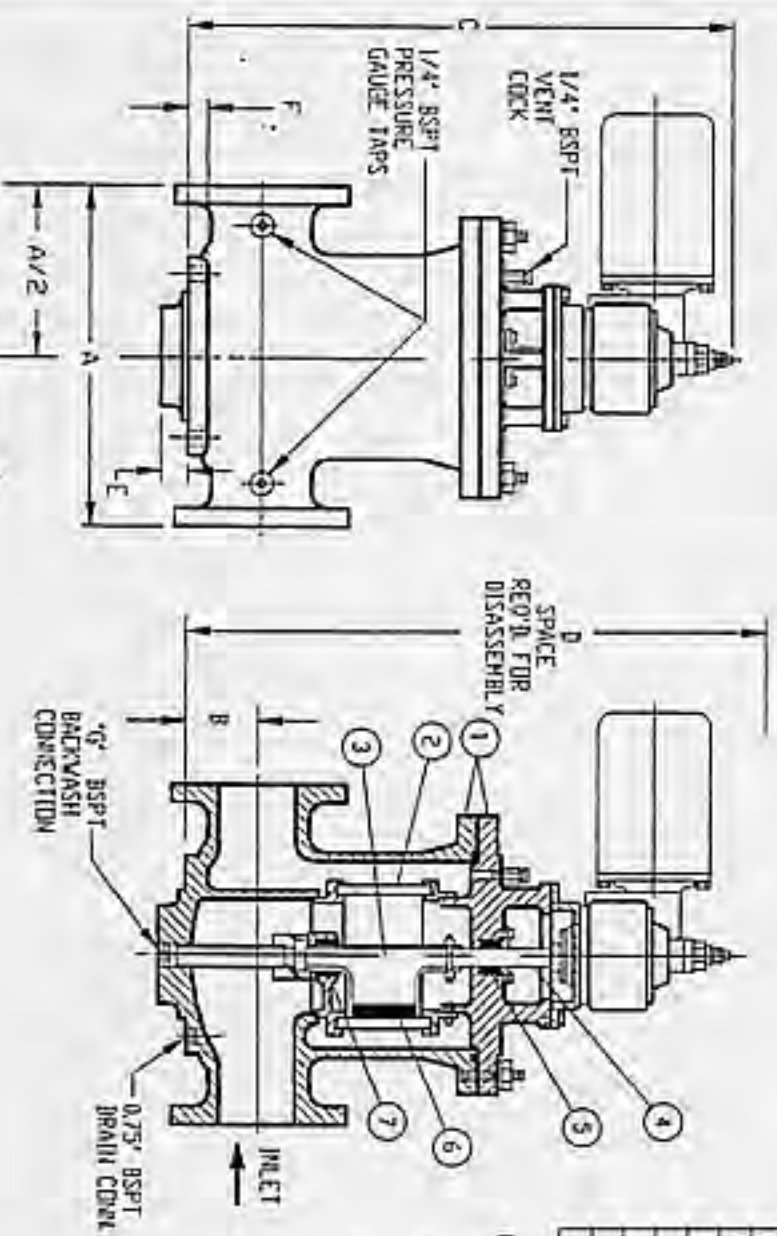


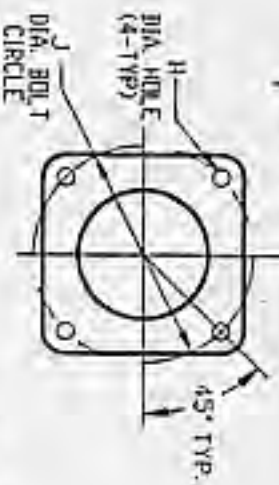
TYPE SIZE DIMENSIONS	DIMENSIONS												WEIGHT			HAYWARD PART NO.									
	A IN.	A MM.	A/2 IN.	A/2 MM.	B IN.	B MM.	C IN.	C MM.	D IN.	D MM.	E IN.	E MM.	F IN.	F MM.	G IN.		G MM.	H IN.	H MM.	J IN.	J MM.	COVER LBS. KGS.	BODY LBS. KGS.	NET LBS. KGS.	596200140
2" (50mm)	17.5 / 445	18.13 / 461	3.89 / 99	3.89 / 99	28 / 711	3.7 / 94.0	1.38 / 35	1.00 / 25	1 / 25.0	0.75 / 19	1.98 / 50.2	1.25 / 37	280 / 127	315 / 143	596200140	596200140	596200140	596200140	596200140	596200140	596200140	596200140	596200140	596200140	596200140
3" (75mm)	17.5 / 445	18.13 / 461	3.89 / 99	3.89 / 99	28 / 711	3.7 / 94.0	1.38 / 35	1.00 / 25	1 / 25.0	0.75 / 19	1.98 / 50.2	1.25 / 37	285 / 129	320 / 145	596200140	596200140	596200140	596200140	596200140	596200140	596200140	596200140	596200140	596200140	596200140
4" (100mm)	17.5 / 445	18.13 / 461	3.89 / 99	3.89 / 99	28 / 711	3.7 / 94.0	1.38 / 35	1.00 / 25	1 / 25.0	0.75 / 19	1.98 / 50.2	1.25 / 37	290 / 132	320 / 145	596200140	596200140	596200140	596200140	596200140	596200140	596200140	596200140	596200140	596200140	596200140
6" (150mm)	28.0 / 711	28.98 / 734	6.12 / 156	6.12 / 156	39 / 991	5.0 / 127.0	1.68 / 48	1.25 / 32	1-1/2 (40)	1.13 / 29	2.25 / 54.0	1.30 / 195	1200 / 545	1375 / 624	596200140	596200140	596200140	596200140	596200140	596200140	596200140	596200140	596200140	596200140	596200140
8" (200mm)	28.0 / 711	27.90 / 696	6.12 / 156	6.12 / 156	39 / 991	5.0 / 127.0	1.68 / 48	1.25 / 32	1-1/2 (40)	1.13 / 29	2.25 / 54.0	1.30 / 195	1200 / 545	1375 / 624	596200140	596200140	596200140	596200140	596200140	596200140	596200140	596200140	596200140	596200140	596200140



NO.	PART NAME	MATERIAL
1	BODY/COVER	CAST IRON A126 CL.B
2	STRAINING ELEMENT	316 STAINLESS STEEL
3	BACKWASH ARM	CAST IRON A126 CL.B
4	BACKWASH SHAFT	CARBON STEEL A151 1140
5	PACKING SEAL	DUCK AND RUBBER
6	PISTON SEAL	URETHANE
7	BEARING	COMPOSITE

- NOTES:
- ALL FLANGE CONNECTIONS CONFORM TO DIN 2501 PN16.
 - FOR REPLACEMENT PARTS, MODEL NO., SIZE, AND SERIAL NO., FROM THE STRAINER NAMEPLATE MUST BE FURNISHED.
 - MAX. WORKING PRESSURE: 150 PSI @ 150° F (10.3 BAR @ 65.5° C)

CERTIFIED FOR:
 P.I.D. NO:
 REG. NO:
 QUOTE NO:
 TAG NO:
 STRAINING ELEMENT:



MOUNTING ARRANGEMENT

REPRODUCTION IN WHOLE OR IN PART IS PROHIBITED WITHOUT THE WRITTEN PERMISSION OF HAYWARD INDUSTRIAL PRODUCTS, INC.

UNAUTHORIZED USE, MANUFACTURE OR REPRODUCTION IN WHOLE OR IN PART IS PROHIBITED WITHOUT THE WRITTEN PERMISSION OF HAYWARD INDUSTRIAL PRODUCTS, INC.



HAYWARD INDUSTRIAL PRODUCTS, INC.
 800 FRENCH AVE., ELIZABETH, NEW JERSEY 07208

MODEL 598 STRAIN-O-MATIC
 DIN PN16 FLANGE SELF-CLEANING STRAINERS
 SIZES 2" THRU 8" CAST IRON

REV.	DATE	BY	CHKD.	APP.
A3	09/00			

DATE 27/10/00

A3-1272

DATE 27/10/00

PROSEP FILTER SYSTEMS LTD
Unit G19
River Bank Way
Lowfields Business Park
Elland
West Yorkshire
HX5 9DN

Tel: 01422 377367

Fax: 01422 377369

Email: enquiries@prosep.co.uk

www.prosep.co.uk

Map and Directions to Prosep Filters Limited



Leave M62 at Junction 24.

At roundabout adjacent to Cedar Court Hotel take 2nd exit onto dual carriageway (A629), signposted Halifax.

Take 1st exit slip road.

At roundabout at end of sliproad, take 3rd exit off.

This is the entrance to Lowfields Business Park.

Proceed straight over 1st roundabout.

At next roundabout take 2nd exit onto River Bank Way - Prosep Filters can be found on the left after the S-bend.

[Link to Google Maps](#)