

200 Series

Racor's Marine Spin-On 200 Series fuel filter/water separators are available in three sizes to fit any engine compartment. All three assemblies feature 1/4"-18 NPTF inlet and outlet fuel ports, a unitized mounting bracket for mounting versatility, an in-head primer pump for quick fuel system priming, a metal sediment and water collection bowl (safe for inboard use), a vent plug to easily evacuate trapped air, and a 10 micron AquablocII filter element which repels nearly 100% of all free water found in fuel.

If quality is what you want and filtration is what you need, then a Racor 200 Series fuel filter/water separator is the answer. Experienced sailors trust their engines, their livelihood and even their lives to Racor. Shouldn't you?



215RMAM



230RMAM



245RMAM



200 Series

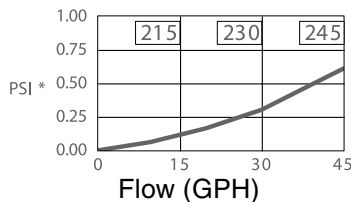
200 Series Overview



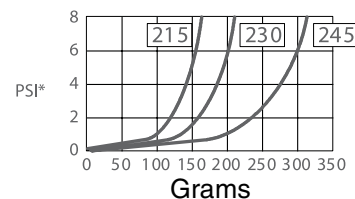
Specifications	215RMAM	230RMAM	245RMAM
Maximum Flow Rate	15 GPH (57 LPH)	30 GPH (114 LPH)	45 GPH (170 LPH)
Port Size	¼"-18 NPTF	¼"-18 NPTF	¼"-18 NPTF
Number of Ports: <i>Inlets</i> <i>Outlets</i>	1 2	1 2	1 2
Replacement Element	R15TUL	R20TUL	R25TUL
Center Threads	1"-14	1"-14	1"-14
Height	8.3 in. (21.1 cm)	9.0 in. (22.9 cm)	10.5 in. (26.7 cm)
Width	4.0 in. (10.2 cm)	4.0 in. (10.2 cm)	4.0 in. (10.2 cm)
Depth	4.0 in. (10.2 cm)	4.0 in. (10.2 cm)	4.0 in. (10.2 cm)
Weight	1.8 lb (0.8 kg)	2.0 lb (0.9 kg)	2.2 lb (1.0 kg)
Clean Pressure Drop	0.12 PSI (0.83 kPa)	0.31 PSI (2.14 kPa)	0.61 PSI (4.21 kPa)
Maximum Operating Pressure	30 PSI (207 kPa)	30 PSI (207 kPa)	30 PSI (207 kPa)
Bowl Capacity	2.0 oz (58 ml)	2.0 oz (58 ml)	2.0 oz (58 ml)
Water Removal Efficiency	99%	99%	99%
Ambient Fuel Temperature	-40° to +250°F (-40° to +121°C)		
Max. Fuel Temperature	190°F (32°C)		

Test Data

(Test results are from controlled laboratory testing. Field results may vary.)



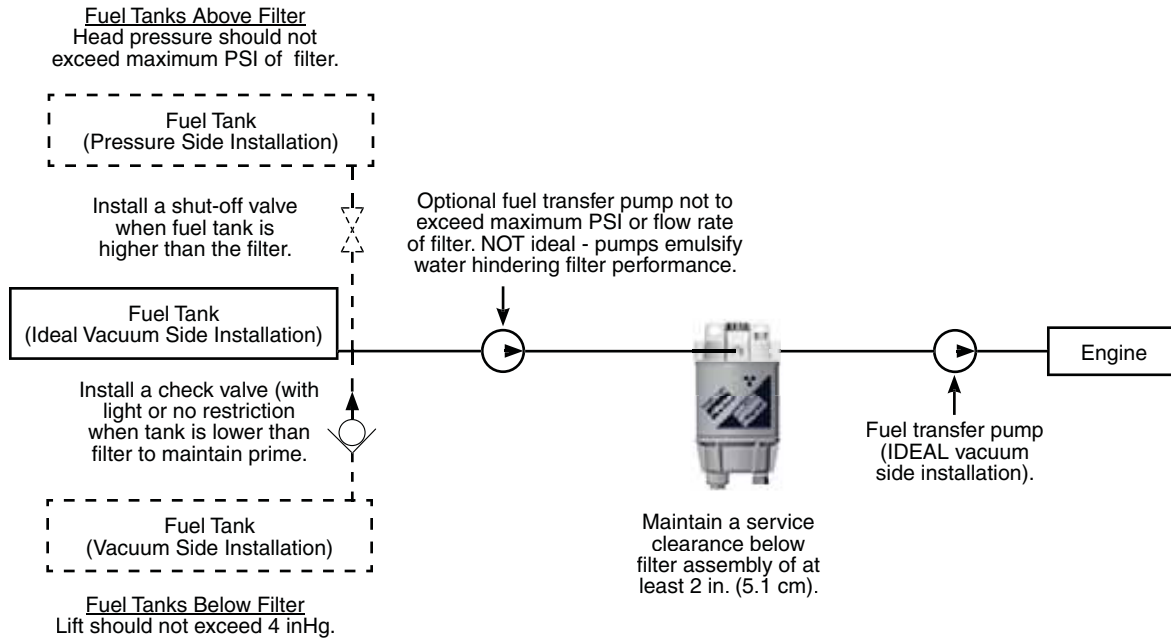
SAE J905 Fuel Flow Restriction



SAE J905 Solids Capacity
(using SOFTC-2A; 10 mic. Element)

*PSI X 2.036 = inHg. / PSI X 6.895 = kPa

Installation Diagram



Installation diagram applies to all 200 Series filters. Model 215RMM shown above. Racor offers hose and fittings to complete this installation. See Marine Accessories.

Mounting Information



200 Series

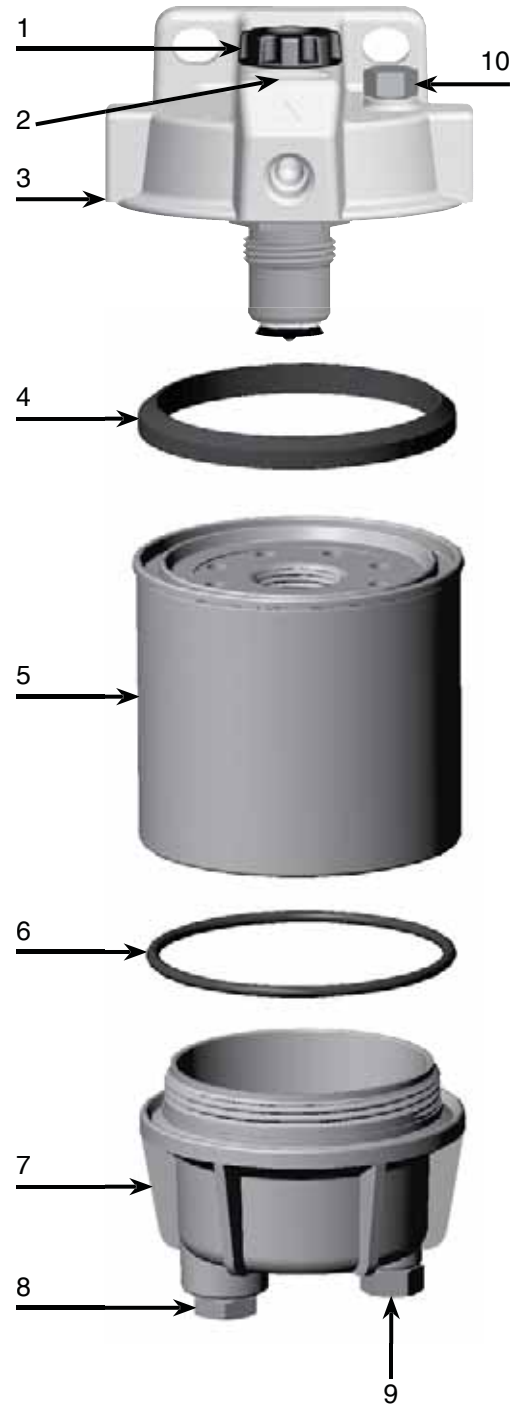
Replacement Parts

215RMAM, 230RMAM and 245RMAM

Part No.	Description
1. RK20025-01	Primer Pump Kit
2. RK20011-01 RK 20742	Checkball Kit with Plastic Cap Metal Cap Kit
3. RK20046-01	Head Kit (1/4" NPTF Ports) (includes #'s 1-4)
4. RK 22061	Gasket Kit
5. Replacement Elements (includes #'s 4 and 6) R15TUL R20TUL R25TUL	10 Micron (UL Recognized) 10 Micron (UL Recognized) 10 Micron (UL Recognized)
6. RK 22244	Bowl O-ring Kit
7. RK 22368	Metal Bowl Kit (includes #'s 6, 8 and 9) (3/8" NPT drain Plug) (1/2"-20 probe port)
8. 918-N6	Steel Plug (3/8" NPT)
9. RK 20022	Metal Plug Kit (1/2"-20 UNF)
10. RK 10110	Metal Vent Plug Kit (3/8"-16 UNF)

Additional Parts (not shown)

RK20075-01	Complete Seal Service Kit
RK 12041	Port Plug Kit (1/4" NPT)
22360	Installation Instructions





01422 377367



enquiries@prosep.co.uk

PROSEP
FILTER SYSTEMS LTD

WE ARE YOUR **'ONE STOP SHOP'** FOR ALL
OF YOUR FILTRATION REQUIREMENTS

LIQUID FILTRATION

- CARTRIDGES
- FILTER BAGS
- VESSELS
- STRAINERS

AIR FILTRATION

- VENT FILTERS
- STERILE AIR
- VACCUM
- AIR-CONDITIONING
- FILTER MEDIA

DOMESTIC

- ULTRAVIOLET
- TREATMENT OF BOREHOLES,
SPRINGS & WELLS
- WATER TESTING

FUEL FILTRATION

- DIESEL, AVIATION



Prosep Filter Systems Ltd
Unit G19, River Bank Way,
Lowfields Business Park,
Elland, West Yorkshire
HX5 9DN

Phone: 01422 377367
email: sales@prosep.co.uk
www.prosep.co.uk



for all your filter requirements