



## PHI Single Filter Housing

In-line sanitary liquid and gas

- Inline sanitary single round housing
- Designed specifically for Food & Beverage and Pharmaceutical applications.
- Single cartridge, K to 40" (226) housings
- Sanitary Tri-clamp connections
- Suitable for PED Group 1 & 2 Liquids and Gas
- Full material traceability



### Specifications

#### Materials of Construction

Housing: 316L/1.4404

#### Surface Finish

Internal: Mechanical Polishing to <0.8um Ra  
External: Mechanical Polishing

Cartridge Socket: C (226) Style  
Number of Cartridges: 1

#### Technical Design Data

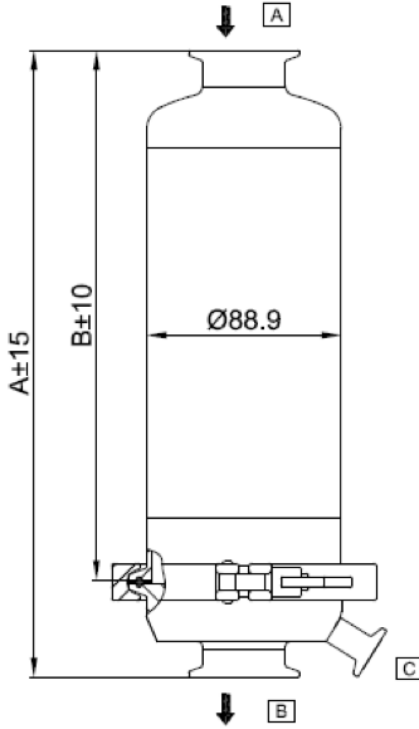
Design Code: PED 2014/68/EU  
PED Category: SEP (ART 4.3), CAT I  
PED Fluid Group: 1 & 2  
PED Fluid State: Liquid & Gas  
ATEX Regulation: Group 2, CAT 2 Gas & Dust  
Fluid GR IIIC, Zone 1 & 21

Design Pressure: 10 Bar at 150°C

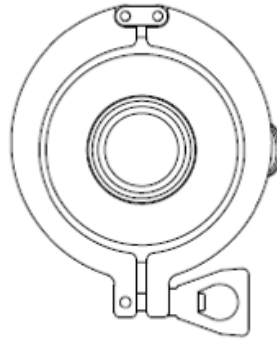
Certification: Supplied as standard with IOMI and vessel inspection certificate

## Dimensions

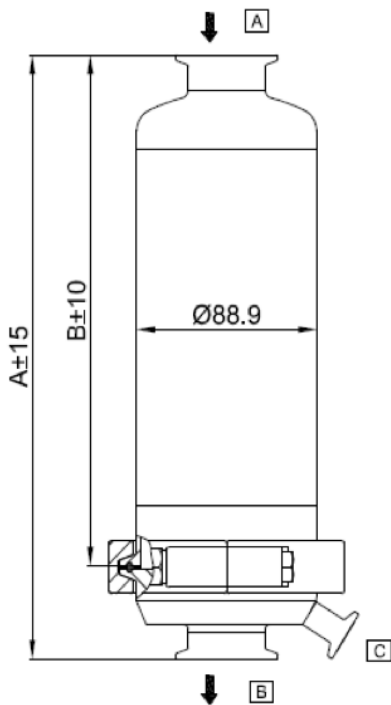
### Fluid Group 2 Version



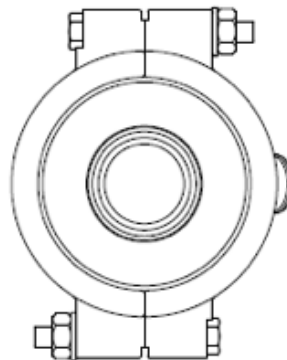
Vessel Model	Cartridge Height	Dimension A	Dimension B	PED Category
PHI01K	5"	272	227	4.3
PHI011	10"	375	333	4.3
PHI012	20"	625	581	4.3
PHI013	30"	875	831	4.3
Connections:				
A (Inlet)	1.5" Tri-Clamp			
B (Outlet)	1.5" Tri-Clamp			
C (Drain)	1/2" Tri-Clamp			



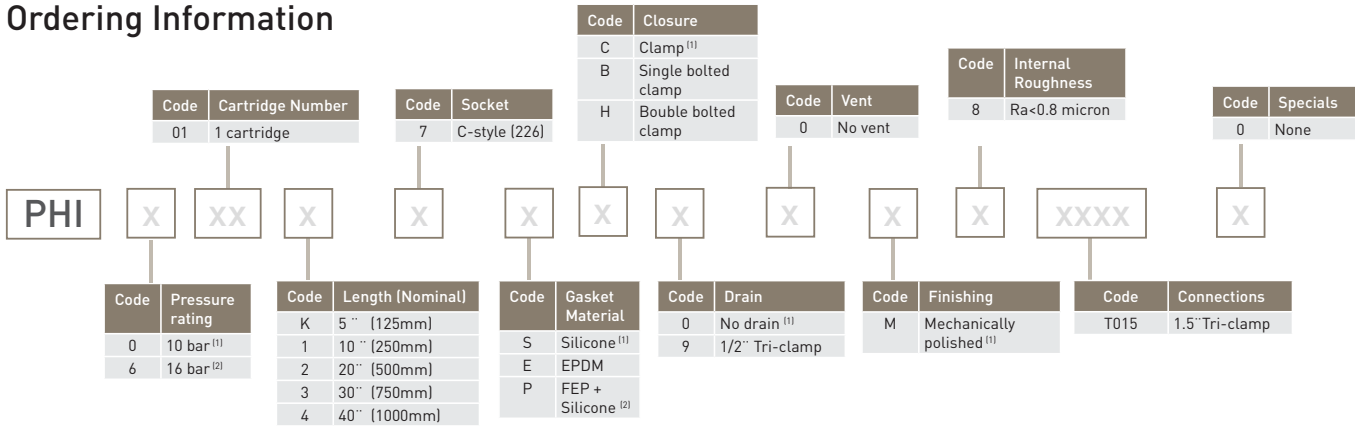
### Fluid Group 1 Version



Vessel Model	Cartridge Height	Dimension A	Dimension B	PED Category
PHI01K	5"	272	227	4.3
PHI011	10"	375	333	4.3
PHI012	20"	625	581	I
PHI013	30"	875	831	I
Connections:				
A (Inlet)	1.5" Tri-Clamp			
B (Outlet)	1.5" Tri-Clamp			
C (Drain)	1/2" Tri-Clamp			



## Ordering Information



<sup>(1)</sup> Standard configuration (offers better lead-time)

<sup>(2)</sup> Requires a double bolt clamp

